

# METRO BUSINESS PARK

SALT LAKE CITY, UTAH

FOR LEASE



This nine building business park, located in the well established highly attractive location of Salt Lake City. With convenient access via Highway 201, I-80, and the I-15 Interchange and minutes to the Salt Lake City International Airport. Metro Business Park features walking access to Trax, ample parking, and beautifully landscaped green space. This park is an ideal option for all businesses.

## Project Highlights:

- Walking access to Trax
- Zoned: Business/Research Park
- Easy access
- Centrally Located in the Salt Lake Valley
- Minutes away from Salt Lake International Airport and Downtown Salt Lake



Brandon Fugal  
+1 801 947 8300  
brandon.fugal@colliers.com

Josh Smith  
+1 801 947 8300  
josh.smith@colliers.com

Jordan Wall  
+1 801 947 8300  
jordan.wall@colliers.com



# METRO BUSINESS PARK

SALT LAKE CITY, UTAH



## ADJACENT TO TRAX STOP

BUILDING Q	AVAILABLE DATE	RATE	SQ. FT.
------------	----------------	------	---------

Suite B	Now	\$9.00/YR NNN	5,601
---------	-----	---------------	-------

BUILDING V	AVAILABLE DATE	RATE	SQ. FT.
------------	----------------	------	---------

Suite B	Now	\$9.00/YR NNN	7,800
---------	-----	---------------	-------



Brandon Fugal  
+1 801 947 8300  
brandon.fugal@colliers.com

Josh Smith  
+1 801 947 8300  
josh.smith@colliers.com

Jordan Wall  
+1 801 947 8300  
jordan.wall@colliers.com

# METRO BUSINESS PARK BUILDING Q

1300 WEST 2235 SOUTH | SALT LAKE CITY, UTAH



## Suite B:

- 5,601 Sq. Ft.
- Lease rate: \$9.00/YR NNN
- Former restaurant/catering
- (2) grade level doors
- Clear height: 18'
- HVAC throughout



Brandon Fugal  
+1 801 947 8300  
brandon.fugal@colliers.com

Josh Smith  
+1 801 947 8300  
josh.smith@colliers.com

Jordan Wall  
+1 801 947 8300  
jordan.wall@colliers.com



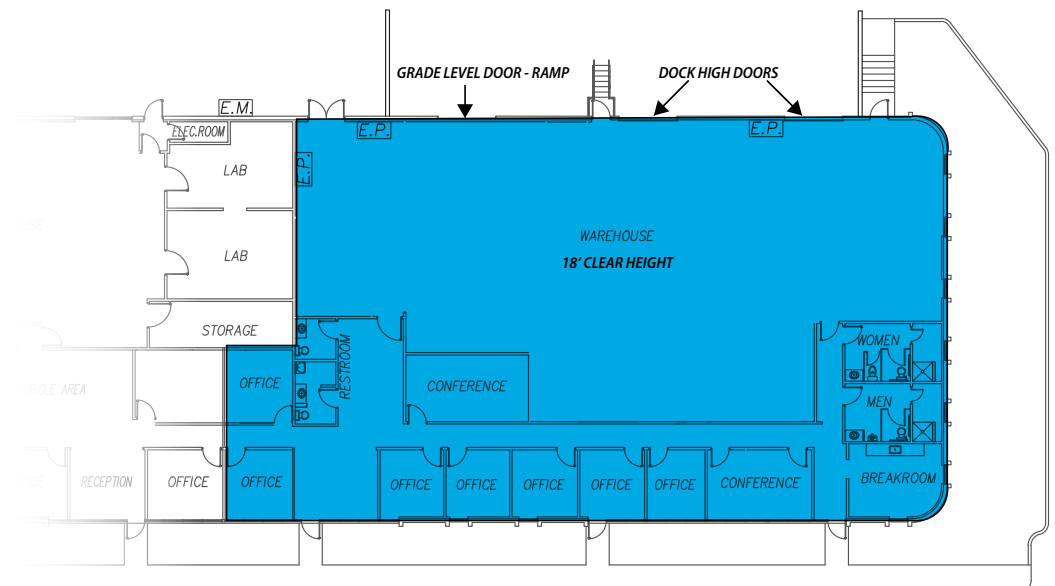
# METRO BUSINESS PARK BUILDING V

1242 WEST 2320 SOUTH | SALT LAKE CITY, UTAH



## Suite B:

- 7,800 Sq. Ft.
- Lease rate: \$9.00/YR NNN
- Two dock high roll-up doors
- One roll-up door accessed by grade level ramp
- 18' Clear Height



Brandon Fugal  
+1 801 947 8300  
brandon.fugal@colliers.com

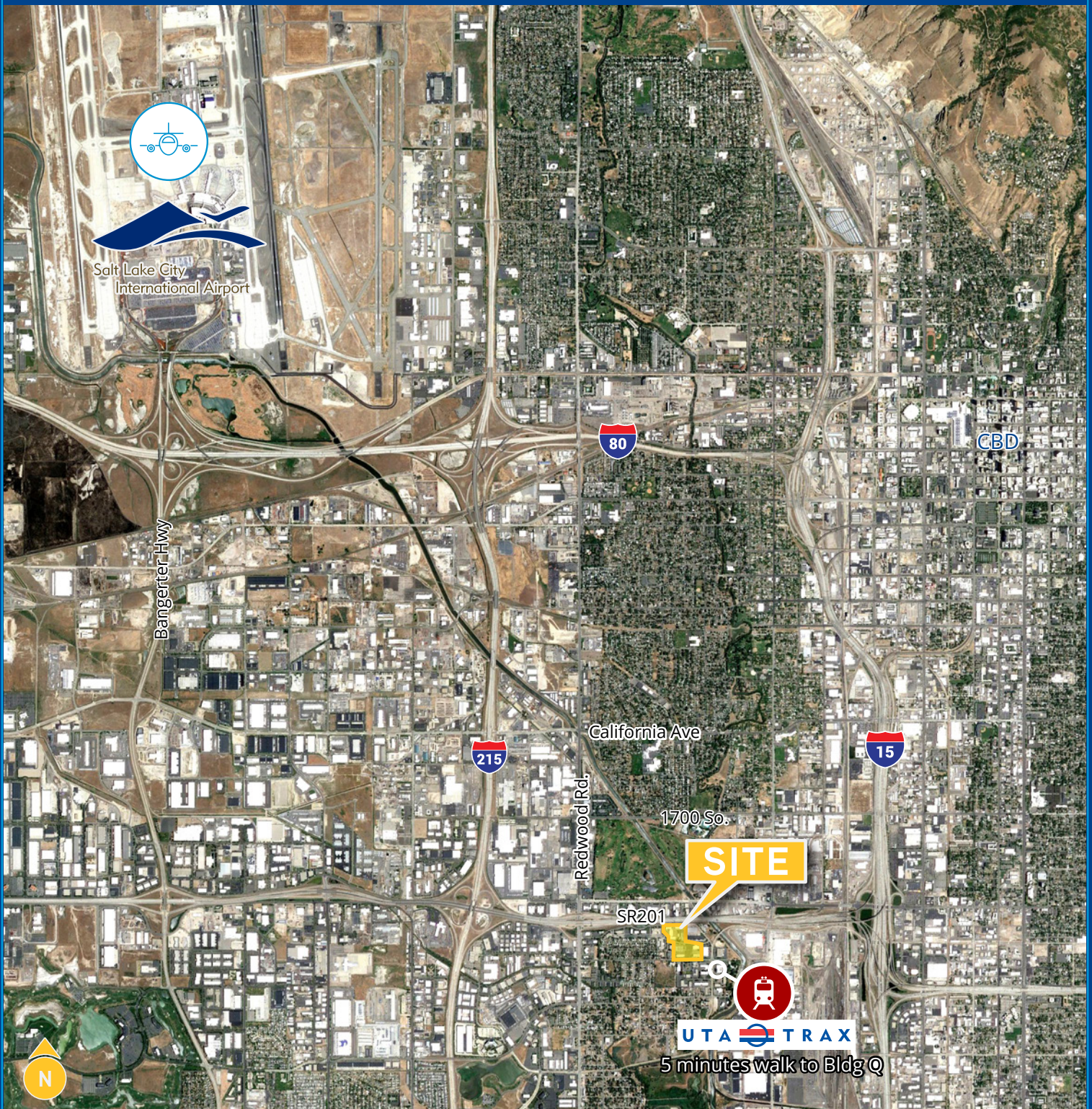
Josh Smith  
+1 801 947 8300  
josh.smith@colliers.com

Jordan Wall  
+1 801 947 8300  
jordan.wall@colliers.com



# METRO BUSINESS PARK

SALT LAKE CITY, UTAH



Brandon Fugal  
+1 801 947 8300  
brandon.fugal@colliers.com

Josh Smith  
+1 801 947 8300  
josh.smith@colliers.com

Jordan Wall  
+1 801 947 8300  
jordan.wall@colliers.com

This document has been prepared by Colliers International for advertising and general information only. Colliers International makes no guarantees, representations or warranties of any kind, expressed or implied, regarding the information including, but not limited to, warranties of content, accuracy and reliability. Any interested party should undertake their own inquiries as to the accuracy of the information. Colliers International excludes unequivocally all inferred or implied terms, conditions and warranties arising out of this document and excludes all liability for loss and damages arising there from. This publication is the copyrighted property of Colliers International and/or its licensor(s). ©2020. All rights reserved.